

Monitoring Tools For Windows

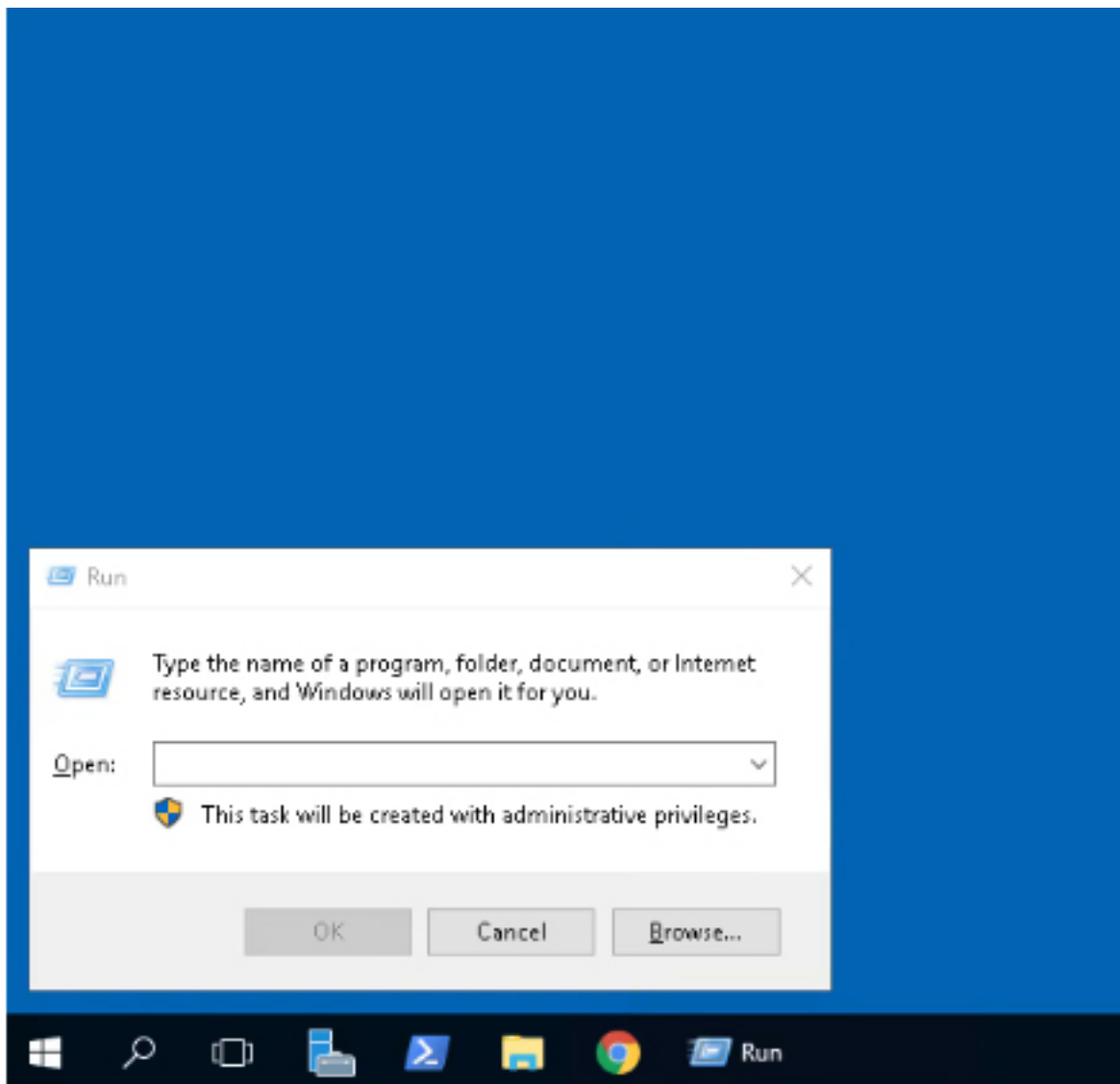
Authored by: **ASPHostServer Administrator** [asphostserver@gmail.com]

Saved From: <http://faq.asphosthelpdesk.com/article.php?id=320>

Monitoring your server resources is a critical part of server management. This guide will show you how to monitor different resources on your server and identify when it may be time to think about upgrading to get more resources.

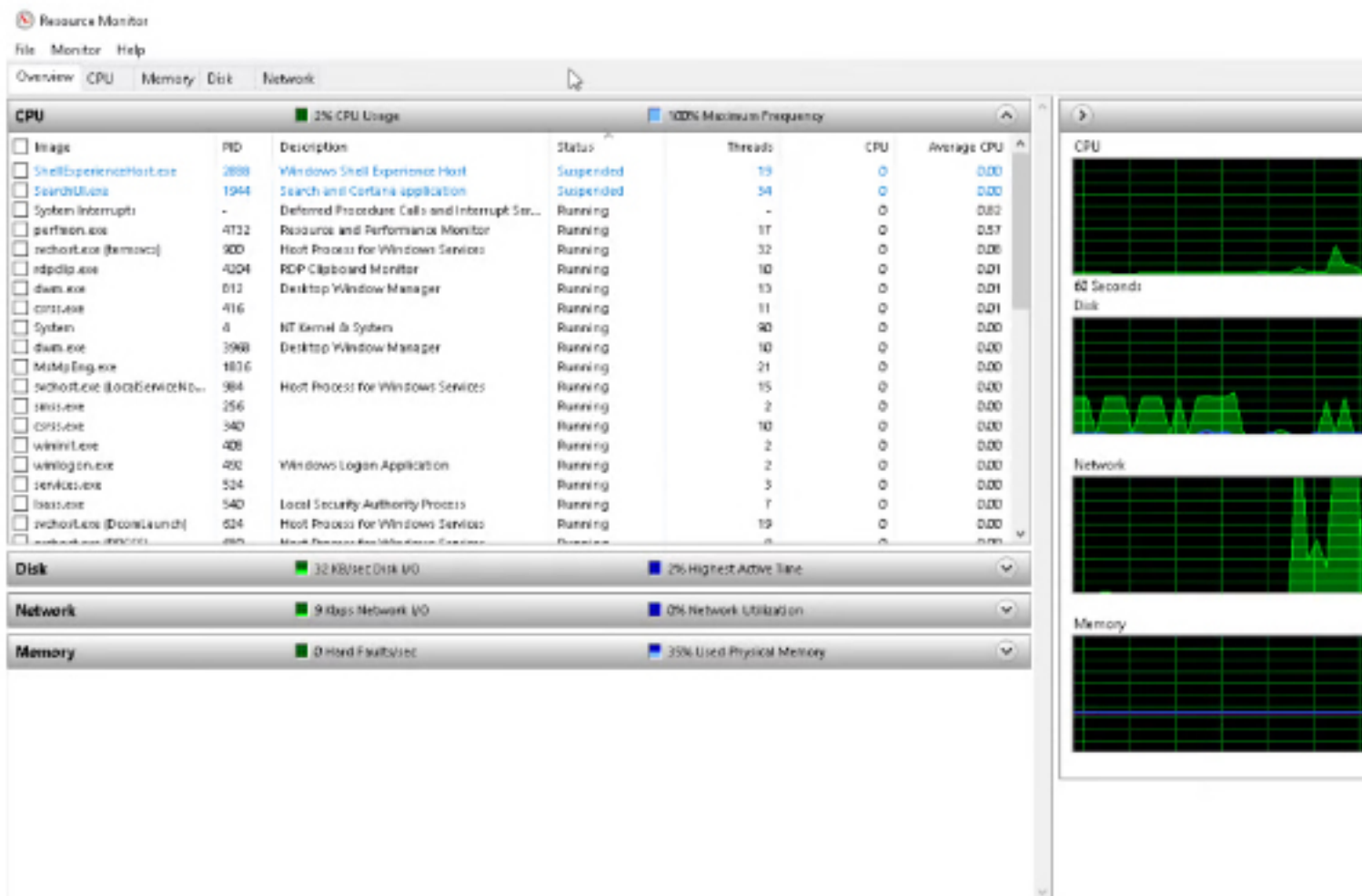
How to Access the Resource Monitor in Windows Server

From your Desktop in Windows Server, press **Å + R** simultaneously to bring up the Run menu.



Type "resmon" in the text box, and click "OK."

You will now see your Resource Monitor dashboard.



From here, you can see the overall usage of your system and navigate to the different tabs along the top to view more detailed information.

CPU Usage If you navigate to the CPU tab along the top of the window, you will be able to see detailed usage of your cores and threads.

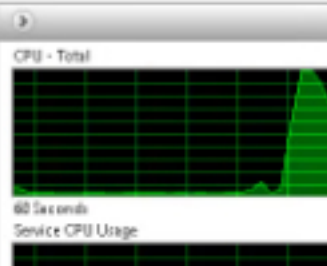
Resource Monitor

File Monitor Help

Overview CPU Memory Disk Network

Processes 5% CPU Usage 100% Maximum Frequency

Process	PID	Description	Status	Threads	CPU	Average CPU
lsass.exe	160	Local Security Authority Process	Running	4	0	0.00
SearchUI.exe	3628	Search and Cortana application	Suspended	35	0	0.00
ShellExperienceHost.exe	3544	Windows Shell Experience Host	Suspended	27	0	0.00
chrome.exe	3844	Google Chrome	Running	46	0	16.30
chrome.exe	2224	Google Chrome	Running	17	0	17.73
chrome.exe	452	Google Chrome	Running	7	0	3.59
WinProSE.exe	3740	WMI Provider Host	Running	15	0	2.35
perfmon.exe	1412	Resource and Performance Monitor	Running	17	2	2.09
chrome.exe	3652	Google Chrome	Running	16	0	1.87
svchost.exe (services)	640	Host Process for Windows Services	Running	33	1	1.21



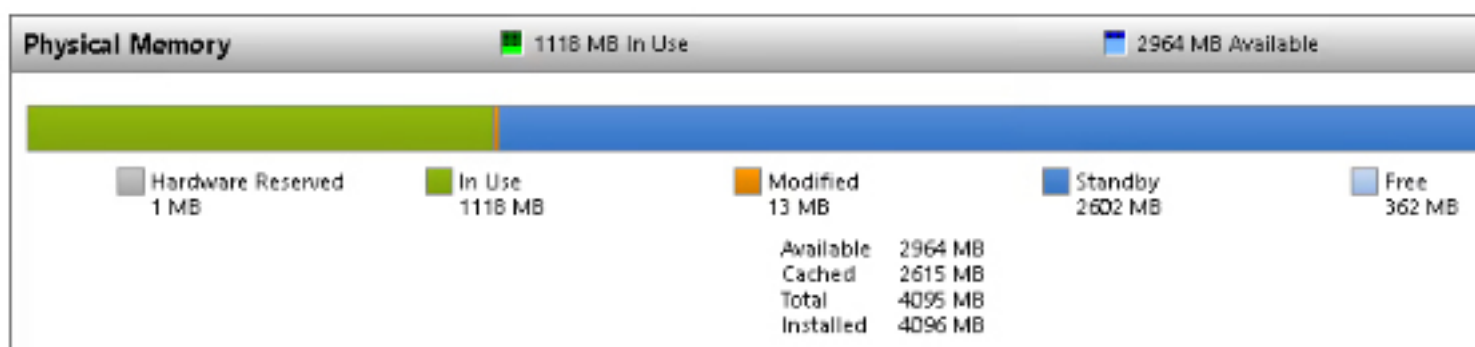
Services 1% CPU Usage

Name	PID	Description	Status	Group	CPU	Average CPU
WinDefend	1380	Windows Defender Service	Running	system	0	0.34
StateRepository	1740	State Repository Service	Running	appcmd	0	0.19

The processes section of the screen details current processes that are currently using your CPU resources.

The services section outlines all the services running on your server and the load they are applying to your CPU resources.

Memory The Memory tab at the top of the window will show you the current load all of your processes are putting on your RAM resources. It will also show you a bar of memory in use, modified, in standby, or free.



Disk Usage

The Disk tab will show you detailed information regarding your disk space and I/O processes. Under the Storage section on this tab, you can find the remaining free disk space in MB.

Resource Monitor

File Monitor Help

Overview CPU Memory Disk Network

Processes with Disk Activity

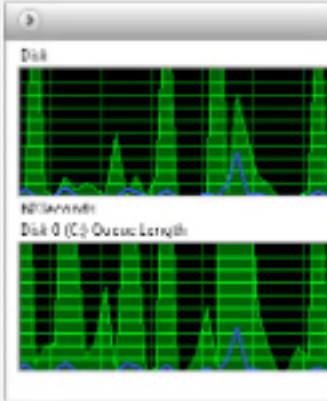
Process	PID	Read (B/s)	Write (B/s)	Total (B/s)
Image				
System	4	1,000	232,004	233,004
chrome.exe	2944	2,207	12,070	14,277
msedge.exe	1390	1,000	4,499	5,499
chrome.exe	2652	0	2,057	2,057
svchost.exe (Network Service)	1252	250	0	250

Disk Activity

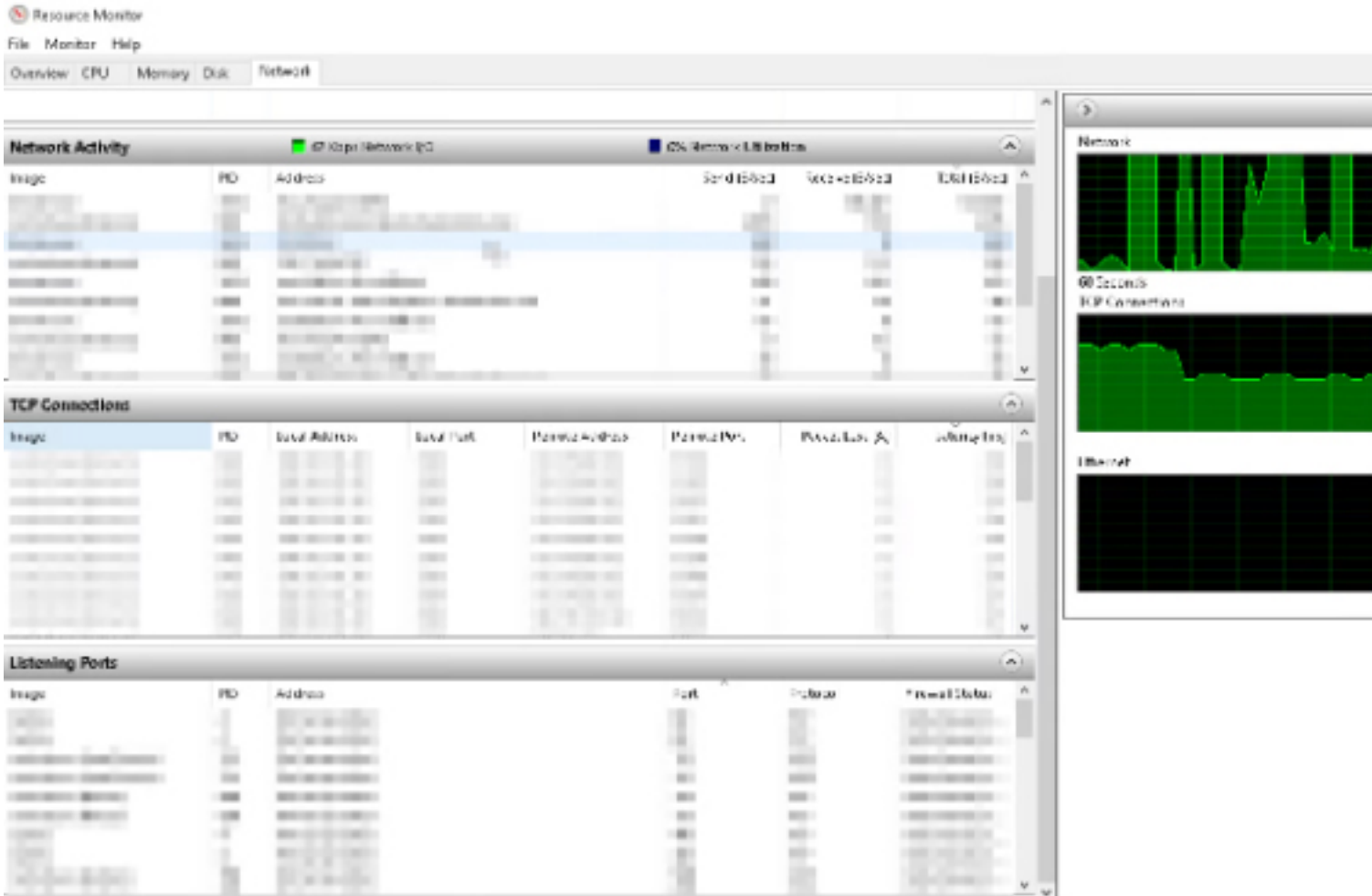
Process	PID	File	Read (B/s)	Write (B/s)	Total (B/s)	I/O Priority	Response Time (ms)
System	4	C:\Users\Administrator\...	0	128	128	Normal	55
System	4	C:\Users\Administrator\...	0	128	128	Normal	54
System	4	C:\Users\Administrator\...	0	128	128	Normal	52
System	4	C:\Users\Administrator\...	0	288,710	288,710	Normal	52
System	4	C:\Windows\System32\...	0	128	128	Normal	48
System	4	C:\Users\Administrator\...	0	128	128	Normal	46
System	4	C:\Users\Administrator\...	0	31,671	31,671	Normal	46
System	4	C:\Users\Administrator\...	0	20	20	Normal	46
System	4	C:\Users\Administrator\...	0	128	128	Normal	40

Storage

Logical Disk	Physical Disk	Active Time (%)	Available Space	Total Space (MB)	Disk Queue Le...
C:	0	11.02	14,000	14,000	0.10



Network



The Network tab will show you detailed information regarding the network activity of your server. This information includes sent and received bytes per second, current TCP connections, as well as detailed information about the ports on your server.

Running Low On Resources? If you seem to be hitting the limits of the current resources allocated to your server, it may be time to either uninstall or optimize your programs or upgrade your service.